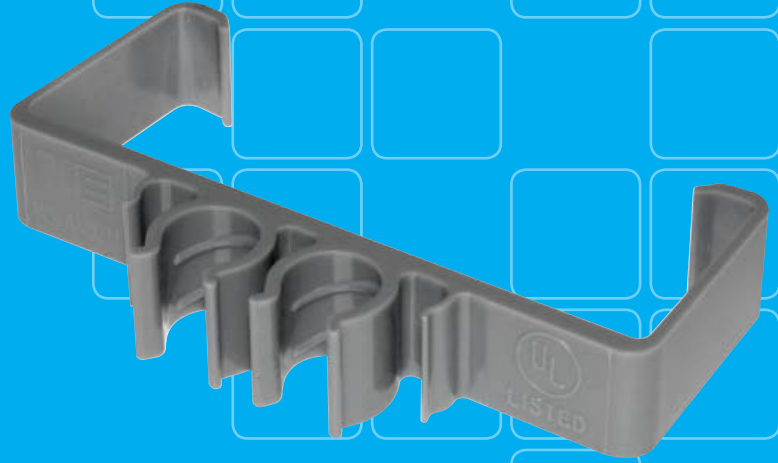


hangers & supports



Innovation. It's what Madison is all about. Check out our Madison Strap, the product that started it all. Invented in 1929 by our founder Earl Adkinson, Madison has been on the cutting edge of electrical products ever since. Our newest support innovation for the 21st century is the UL listed Clip-It. All of our hangers and supports are made of high quality materials and produced to exacting standards. From Madison Straps to Clip-It and everything in between, Madison has the hangers and supports you need to get the job done right!



CLAMP BACKS MALLEABLE

Provides space between conduit and mounting surface



Material: Malleable Iron, Zinc Plated

Certifications: UL Listed (1/2" - 4" only)

Notes: For use with malleable or aluminum straps



ITEM#	TRADE SIZE	INNER QTY	MSTR. QTY	ITEM#	TRADE SIZE	INNER QTY	MSTR. QTY
1170	1/2"	25	250	1176	2-1/2"	5	25
1171	3/4"	25	250	1177	3"	N/A	10
1172	1"	25	125	1178	3-1/2"	N/A	10
1173	1-1/4"	20	100	1179	4"	N/A	10
1174	1-1/2"	10	100	1179A	5"	N/A	2
1175	2"	10	50	1179B	6"	N/A	2

PERFORATED HANGER STRAP

Straps and supports pipe and used in other fastening applications



Material: Galvanized Steel

ITEM#	TRADE SIZE	INNER QTY	MASTER QTY
81	3/4"	N/A	24

FIXTURE HANGERS MALLEABLE

Ball-type swivel fixture covers for pendant mounted fixtures



Material: Malleable Iron

Certifications: UL Listed, Federal Spec. W-F-408E, NEMA: FB-1

Features: Suitable for damp locations

Notes: For use with 1/2" or 3/4" fixture conduit stems, octagonal or square boxes



ITEM#	TRADE SIZE	BASE	MAX LOAD	INNER QTY	MASTER QTY
MFHR50-75	4-1/8"	ROUND	50 lbs.	2	10
MFHS50-75	4-1/8"	SQUARE	50 lbs.	2	10

S-HOOKS

Attaches accessories to chain



Material: Steel, Zinc Plated

ITEM#	TRADE SIZE	WORKING LOAD	INNER QTY	MASTER QTY
W-11	3"	50 lbs.	100	1000
W-15	1-1/2"	60 lbs.	100	1000

SINGLE JACK CHAINS

Suspends fixtures



Material: Steel, Zinc Plated

ITEM#	PACK SIZE	WORKING LOAD	INNER QTY	MASTER QTY
W-10	100ft BOX	43 lbs.	100	500
W-12	100ft ROLL	29 lbs.	100	400
W-13	50ft BOX	29 lbs.	50	500

FENDER WASHERS

For general purpose fastening applications



Material: Steel

ITEM#	BOLT SIZE	WASHER SIZE	INNER QTY	MASTER QTY
416	1/4"	1"	100	1000
420	1/4"	1-1/4"	100	1000
428	1/4"	1-1/2"	100	1000
430	3/8"	1-1/2"	100	1000

MADISON STRAP BOX SUPPORTS

Supports switch box in wallboard, plaster, and other old work applications



Material: Galvanized Steel

Notes: Installed in pairs

ITEM#	PACKING	INNER QTY	MASTER QTY
102	BULK	100 PAIRS	500 PAIRS
B-102	BAG	1 PAIR	250 PAIRS

CHANNEL NUT

Anchors bolt to strut



Material: Steel-Electroplated Zinc

STANDARD				W/O SPRING			
ITEM#	TRADE SIZE	INNER QTY	MSTR. QTY	ITEM#	TRADE SIZE	INNER QTY	MSTR. QTY
CNR-025	1/4"-20	N/A	100	CNN-025	1/4"-20	N/A	100
CNR-038	3/8"-16	1	100	CNN-038	3/8"-16	N/A	100